



LOGISTICS LIMITED

**Head Office:** 24 Harbour Road  
P.O.Box 5296, Port Harcourt  
Rivers State

Tel: 08033400114, 08035533124

Fax: 080-866-69081

E-mail: [icanigldphc@icalogistics.com](mailto:icanigldphc@icalogistics.com)

[info@icalogistics.com](mailto:info@icalogistics.com)

[icanigldphc@yahoo.com](mailto:icanigldphc@yahoo.com)

Web: [www.icalogistics.com](http://www.icalogistics.com)

---

## **COMPANY PROFILE**

---

SHIPPING AGENCY  
SHIP CHARTER / BROKERAGE  
FREIGHT FORWARDING / HAULAGE  
CUSTOMS CLEARING  
AIR FREIGHT  
DOOR – TO – DOOR LOGISTICS SERVICES  
EQUIPMENT LEASING  
MARITIME CONSULTANCY

# CONTENTS

Page| 2

	PAGES
A. INTRODUCTION	3
B. MISSION STATEMENT	3
C. OUR SERVICES	3 - 5
D. KEY MANAGEMENT STAFF	6
E. MANAGEMENT CONSULTANTS	7
F. TRACK RECORDS	8 - 11
G. SOME OF OUR MAJOR CLIENTS	12
H. AFFILIATES	12
I. SUBSIDIARY COMPANY	12
J. ORGANISATIONAL CHART	13
K. AVAILABLE COMMUNICATIONS INFRASTRUCTURES	14
L. PRINCIPAL CONTACT OFFICERS	14
M. HEALTH, SAFETY AND ENVIRONMENTAL POLICY	14 - 16
I. PROTECTING THE MARINE ENVIRONMENT	
II. ACCIDENT INVESTIGATION	
III. SAFETY MANAGEMENT CHART	
N. QUALITY CONTROL / ASSURANCE PROCESS	17
I. ANALYSIS CHART	18
O. AUDITORS / CHARTERED ACCOUNTANTS	19
P. ATTORNEYS / SECRETARIES.	19
Q. BANKERS	19
R. REQUIREMENT FOR NEW TI PERMIT	19
S. ANNEXES	20

ICA LOGISTICS LTD was incorporated as a fully indigenous Limited Liability Company since 19<sup>th</sup> October 1973 with RC Number 12098 to offer integrated Maritime services such as Clearing, Forwarding Shipping and Transportation, Stevedoring services to the Shipping and the Offshore Oil & Gas sector. **ICA LOGISTICS LTD** has its registered Offices as follows:-

**Head Office:** No. 24, Harbour Road, Port Harcourt.  
Tel: 08033400114, 0803553124, 08086669081 Fax: 08086669081

**Lagos Branch:** N0. 15 Abraham Adesanya Road Road, Lagos:  
Tel: 08036670858, 08033285465, 08086669083

**Warri Branch:** KW-Airoboyi Estate off Ovie Palace Effurun Warri Delta State.  
Tel: 08033167708, 08055118241, 08086669082

**Abuja Branch:** Room 207, Faddal Plaza Zone, 4 Abuja.  
Tel: 08036367775, 08046104957 08086669131

**U.S.A Branch:** 58030Sovereign Drive Suite 216 Houston Texas 77036 USA  
Tel: (713)3209321, (713)3910799 +(832)7672917 Fax: (832)2038637

## B. MISSION STATEMENT

Our mission is to **provide efficient, prompt, secure, cost effective and competitive customer oriented services.**

## C. OUR SERVICES

As a fully Integrated Shipping and Maritime Services Company, **ICA LOGISTICS LTD (ICAL)** offers a wide range of Services to the Shipping, and Oil and Gas industry. Some of the services include the following:

- Ship Agency/Handling /Husbanding
- Ship chartering/brokerage & surveys
- Customs Clearances.
- Freight forwarding and Allied Services
- Door to Door Logistics services
- Air Freight Handling
- Transportation
- Equipment leasing
- Maritime consultancy

As agents **ICAL** handles vessels efficiently in and out at any Nigeria Sea Port. While in Port we husband vessels under our agency with utmost diligence, dedication, efficiency and meticulousness to ensure a **quick and prompt berthing, discharge, loading and dispatch of ships.**

**A quick turn-around of our clients' vessels is our watch-word and primary objective**

b. **SHIP CHARTERING, BROKERAGE & SURVEYS**

**ICA LOGISTICS LTD** arranges and Brokers Charters of Ships, Tug Boats, Barges, Tankers Reefers Ocean Going Vessels, small and large Hull Vessels and any type of marine crafts like floating cranes and inflatable etc for our client.

**ICA LOGISTICS LTD** has the technical capability and availability to provide these equipment both locally and internationally through our reputable affiliates who are major operator in the Oil and Gas industry/ sector.

Our affiliation afford us the use of any kind of equipment locally available for immediate deployment, and specialized equipment to be sourced internationally within shortest possible time.

We also carry out pre-charter and post charter surveys for suitability of such crafts for our clients before they charter the vessels. Among such surveys are the following.

- On/Off hire, pre-purpose, Hull, machinery and equipment surveys
- Suitability survey for hire, voyage, tow and trip etc.
- Condition Survey
- Bunker Surveys
- Draft Displacement Surveys
- Condition valuation.

c. **CUSTOMS CLEARANCES: FROM SEAPORTS, AIRPORTS AND BORDER PORTS.**

As a Licensed Customs Agent **ICA LOGISTICS LTD** offers a fast Customs formalities and documentations thereby ensuring prompt clearing from Sea Ports, or Air Ports and Border entries of any nature of Cargoes that may range from: Dry-Bulk, Groupage, containerized or Wet-Bulk, specialized project cargoes or equipment and or Air parcels.

At **ICA LOGISTICS LTD**, we assure our valued clients of clearing of any nature of their cargo within **maximum of (7) seven working days.**

Under our Customs Clearances **ICA LOGISTICS LTD**, arranges and procures the following approvals for our valued clients.

- **Temporary Importation approval**
- **Bonded warehouse approval**
- **Exemptions (Possible) for Project Cargos.**

**d. FREIGHT FORWARDING & ALLIED SERVICES**

ICA LOGISTICS LTD has a specialized department that handles both Import and Export Shipments through Nigeria Seaport Airport. We therefore ensure prompt tailor made freight forwarding services for our valued clients especially in the Oil and Gas sector.

**ICA LOGISTICS LTD** provides fleet of varied capacity trucks, special lift trucks, vans Buses, Low beds for the purposes of forwarding our clients cargoes and equipment whether ordinary or specialized equipment to their desired destinations.

**e. DOOR – TO – DOOR LOGISTICS**

Door To Door delivery services are offered by **ICA LOGISTICS LTD** where a client desires such services a proper assessment and evaluation of the scope of services is carried out by **ICA LOGISTICS LTD** in order to provide a convenient and suitable work program to suit the nature, circumstance, emanating locations and final destinations of such deliveries.

**Bottom line is, we tailor such services to clients desired objectives.**

Name your Cargo location and final destination **ICA LOGISTICS LTD** will arrange as follows:

**Packing –Shipping –Clearance- Transportation-Warehousing at your destination delivery to your Project or Office Location.**

**f. STEVEDORING**

ICA LOGISTICS LTD organizes an efficient stevedoring service for clients at their locations or project sites.

**g. CHANDLING**

We offer chandler services to Sea Going vessels and Marine crafts for clients.

ICAL is managed by a group of experienced professionals who are highly dedicated and committed to their professional ethics. They are totally committed to Quality, Safety and cost effectiveness in carrying out their assignments.

In upgrading the skills and professions of our staff, ICAL places emphasis on staff training and development in order to keep in pace with ever increasing technological and operational challenges that are characteristic of the Shipping Industry.

ICAL has the following professionals in the management team.

- |     |                                     |                             |
|-----|-------------------------------------|-----------------------------|
| 1.  | <b>CHAIRMAN</b>                     | <b>ALH. MUBASHIRU ALIYU</b> |
| 2.  | <b>MANAGING DIRECTOR</b>            | <b>ALH. NAIM ALIYU</b>      |
| 3.  | <b>EXECUTIVE DIRECTOR</b>           | <b>MOHAMMED NURU ALIYU</b>  |
| 4.  | <b>DIRECTOR</b>                     | <b>LAMEEN BIDDA</b>         |
| 5.  | <b>GENERAL MANAGER (LAGOS)</b>      | <b>MR. PAUL E. ISA</b>      |
| 6.  | <b>HEAD SHIPPING</b>                | <b>MR. G. O. AZUBUIKE</b>   |
| 7.  | <b>SHIPPING MANAGER</b>             | <b>MR. NATHAN OGUIKE</b>    |
| 8.  | <b>GENERAL MANAGER Hdqrs</b>        | <b>S. S. SANGARI</b>        |
| 9.  | <b>CLEARING MANAGER</b>             | <b>MR. ASUQUO JAMES</b>     |
| 10. | <b>ABUJA OFFICE MANAGER</b>         | <b>HAMISU IYAL</b>          |
| 11. | <b>U.S.A OFFICE GENERAL MANAGER</b> | <b>ADEMOLA OREKOYA</b>      |

ICAL has the following professionals as consultants to the management Team

a. **ENGINEER A. C. PETERS**

Holder of first class engineering Certificate of competency and BSC degree in Marine Engineering from University of Surrey England.

As a trained Marine/Surveyor and examiner, Engr. Peters is serving on several Government Board and Shipping related organizations.

He renders invaluable consultancy services in all Marine related inspections and vessel surveys to **ICA LOGISTICS LTD** as management consultant.

b. **MR. CHIBUZO EKE**

He is a graduate of Federal University of Technology Owerri with a B. Tec. in Maritime Management Technology.

He has worked with SGS Nigeria where he attained a position of Head of Department of Marine/P & I services. He has vast experience in Marine / Oil and gas Cargo/Logistics Services surveys and handling etc. He is an associate member of Nigerian institute of transport administration. He acts as management consultant to **ICA LOGISTICS LTD**.

**TRACK RECORD OF WORK / JOB**

The following are some of the current record of work and services carried out by ICAL

**CUSTOMS CLEARING**

S/N	DESCRIPTION OF JOB	CLIENT
1	6 X 40" Aluminum Anodes	Ray Smith Engr. Co Ltd
2	Sand Blasting Equipment (Grift)	EXXONMOBIL
3	4 packages Angles shape of iron steel	Elf Petroleum
4	21 Packages Simple iron steel pipe	Esso Exploration
5	Drilling Rig: Parts and Accessories Equipments	West African Venture Nigeria Ltd.
6	Create Pallets (1X40")	Marine Platform
7	Seamless Tubularstem And Plates Loose & Bundles (Equipments)	For Total
8	194 Packages Concrete Material	Mobil Producing Nig Ltd
9	(1 X 40") Ship Spares	Damas Oil & Marine
10	Ship Spare on Maridive 603, 232	Maridive offshore

**STATUS**

Successfully, Completed & Delivered

**CUSTOMS CLEARING THROUGH BOARDER ENTRY**

S/N	DESCRIPTION OF JOBS	CLIENTS	STATUS	BOARDER ENTRY
10.	15 Parcels STC (2) Two Pkgs  Cranes Manitowoc Heavy Lift.	Grinake Ltd Construction Ltd Port  Harcourt & For Exxonmobil	Completed	Belel Adamawa State



**CUSTOMS (T.I.) TEMPORARY IMPORTATION APPROVAL**

<b>S/N</b>	<b>DESCRIPTION OF JOB</b>	<b>CLIENTS</b>	<b>STATUS</b>
11	M. V Maneviki Rover	Petrolstuff Nigeria Ltd.	Ongoing
12	M. V Baraka Defender	C & I Leasing Nigeria Ltd	Approved
13	M. V. Bertie "K"	Omak Maritime Nig. Ltd Port Harcourt	Approved
14	M.V Viking Forcardos	"	Approved
15	M.V. Pride	Hydro-Drive Ltd	Approved
16	RIG SEDRIL	Petrolog Ltd C/o SDV	Approved
17	M.V. Limburg	Maersk Nig Ltd	Approved
18	Barge Major	Juva Oil Services C/o SDV	Approved
19	MV Seim Marlin	Marine Platforms Ltd	Approved
20	MV Jascon 15, 16, 18, 20, 38	West African Venture	Approved

**CUSTOMS CLEARING AT AIRPORT ENTERIES**

S/N	DESCRIPTION OF JOB	CLIENTS	STATUS	AIRPORT ENTRY
19.	Parts & Equipments for Port Harcourt	Kobag Ventures	Completed & Delivered	Port Harcourt Airport.
20.	“	“	“	“
21.	“	“	“	“
22.	Marine Engine Parts	Admas Oil & Marine For MV Damas Sky	“	“
23	Ships Spares	Omak Maritime Ltd	“	“
24	Oil Whale Equipment	WAOS	“	“
25	Compressor Refrigerator	Kobag Venture	“	“
26	Oil Field Equipment	Riise Nig Ltd	“	“
27	Oil Wile Equipments	Parker Logistics Services	“	“

**TRANSPORTATION/HAULAGE**

S/N	DESCRIPTION	CLIENTS	NO. OF TRUCKS/TONNAGE	STATUS
1	Haulage of Drilling Pipes from Warri Port & Globestar Engineering facility Complex	Globestar Engineering Co. Ltd Port Harcourt.	120 (30M/T Trucks)	Completed and Delivered
2.	1 X 40” Frozen Fish	Tam-Ebenezer Frozen food Ltd	1(30M/T Truck)	“

**SHIP AGENCY – (PORT OPERATIONS) SERVICES.**

<b>S/N</b>	<b>NAME OF VESSEL</b>	<b>PORT OF ENTRY</b>	<b>STATUS</b>
1.	M. V. Feed Star	Onne Port	Successfully
2.	M. V. Falcon Crest	Onne Port	“
3.	Sea Bulk Coot 1	Onne Port	“
4.	M. V. Limburg	Onne Port	“
5.	MV Argo Services	Warri	“
6.	MV Pagenturm	Onne Port	“
7.	MV American Pride	Tin-can Lagos	“
8	CB Epervier	Onne	“
9	M.V Makokou	Onne	“
10	MV Franceville	Onne	“
11	CB Mangali 2 Barge	Onne	“
12	MV Smit Orca	Port Harcourt	“
13	Mv herkules	Onne	“
14	M.V La Perle	Onne	“
15	M.V Renovation	Onne	Husbandry
16	M.V Utech	Onne	Successfully
17	M.V Vicking Forcados	Onne	On going
18	Greta K	Port Harcourt	“
19	Sanko Dolphin	Port Harcourt	“
20	MV Siem Marlin	Lagos	On going

## **G. SOME OF OUR MAJOR CLIENTS**

**ICA LOGISTICS LTD** is currently having the patronage of the following companies among our major clients:

1. WEST AFRICAN VENTURE LIMITED
2. SEATRUCKS NIGERIA LIMITED
3. RIISE UNDERWATER ENGINEERING LIMITED
4. PETROSTUFF NIGERIA LIMITED
5. PARKER LOGISTICS SERVICES
6. OMAK MARITIME NIG LTD
7. HYDRODIVE LTD
8. MARITIMEX OFFSHORE NIG LTD
9. MARINE PLATFORMS LTD
10. C & I LEASING NIGERIA LTD
11. JOCHRIST ENGINEERING CO. LTD. PHC
12. OCO INDUSTRIAL SERVICES, TAMADI INDL/OUT PH
13. DAMAS OIL & MARINE NIG. LTD. PH.
14. SAFA STEEL CHEMICAL MANUFACTURING.
15. NIGERIAN NATIONAL PETROLEUM COMPANY (NNPC)
16. AQUAR SHIELD NIGERIA LTD .

## **H. AFFILIATES**

**ICA LOGISTICS LTD** has technical affiliation with a major offshore marine supply services company

whose technical know-how and range of Marine crafts and equipment are at the disposal of **ICA LOGISTICS LTD** in the various services which we offer to our clients

## **I. SUBSIDIARY**

ICAL has a subsidiary Company; **MANANN NIGERIA LIMITED**

No. 15 Abraham Adesanya Road Formal Douala Road Apapa; Lagos State

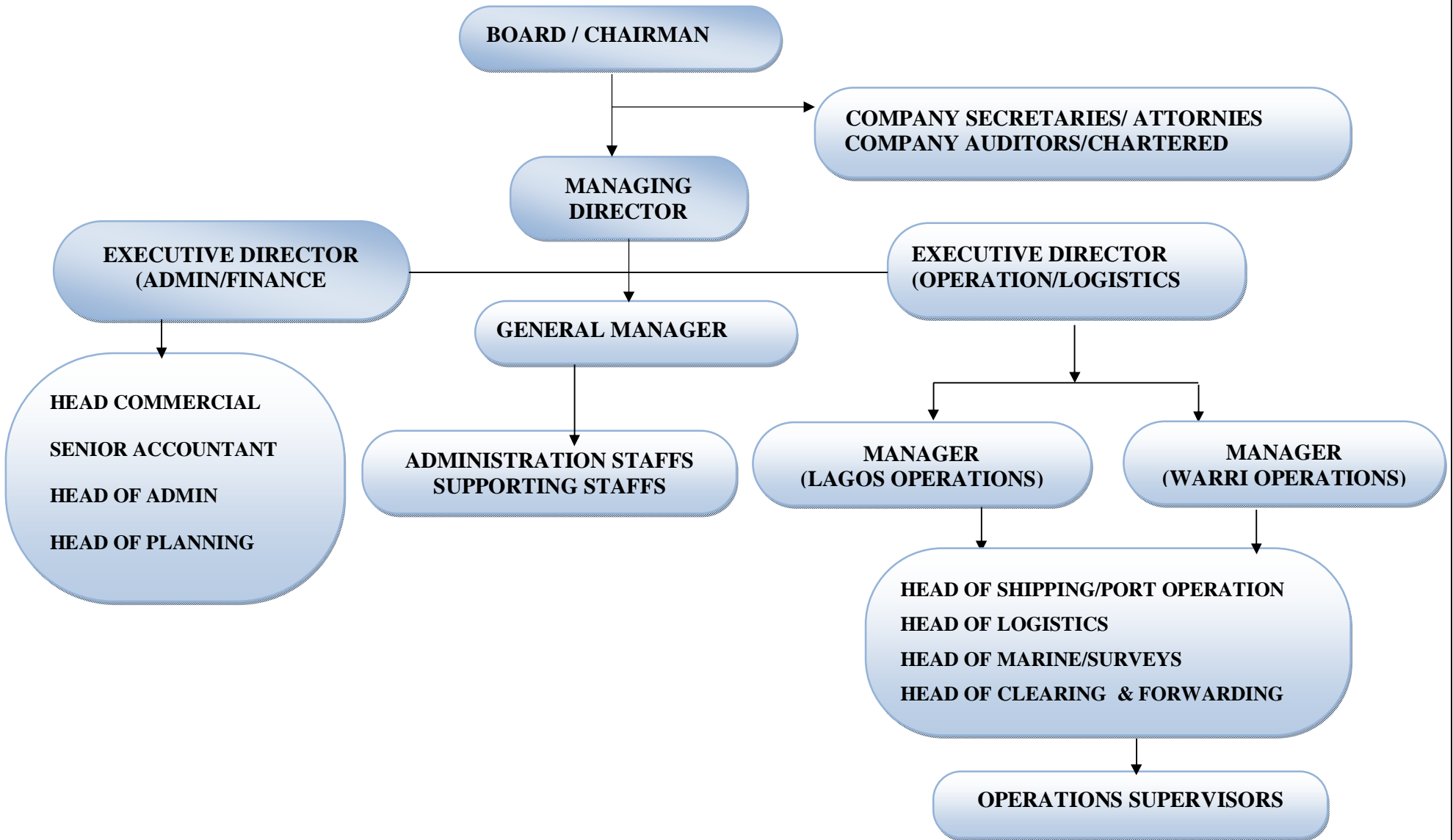
TEL 0805-5117994;

E-mail [info@manannnig.com](mailto:info@manannnig.com)

**MANANN NIGERIA LIMITED** as a subsidiary of ICAL complements the ever-increasing scope of services offered by ICAL in order to efficiently meet our client's demands

**J.**

# ICA LOGISTICS LTD. ORGANIZATIONAL CHART



## **K. AVAILABLE COMMUNICATION/INFRASTRUCTURES**

**ICA LOGISTICS LTD** is effectively serviced and linked by Radio (SSB & VHF) system. We have dedicated Fax Lines, Telephone lines and Internet access (VSAT) to the outside world and our operational field locations and Branch Offices. Effective communications certainly increases the efficiency of our operations.

All our field supervisors are connected to the radio base stations for prompt update of work –in-progress and situation report. A mobile monitoring radio equipped van is always co – coordinating our activities at each location.

## **L. PRINCIPAL CONTACT PERSONS**

For further information and enquiries, please direct all correspondences to:

1. Alhaji Naim Aliyu- Managing Director.  
Tel: 08086669081, Fax 08086669081  
GSM 080355331224,  
Email: [naim@icalogistics.com](mailto:naim@icalogistics.com)
2. Alhaji Moh'd Nuru Aliyu – Executive Director  
Tel: 08086669081, Fax 08086669081  
GSM: 08033400114,  
Email: [mnaliyu@icalogistics.com](mailto:mnaliyu@icalogistics.com)
3. Alhaji Lameen Aliyu- Manager  
Tel/Fax: 053-256418  
E-mail [icanigldwar@yahoo.com](mailto:icanigldwar@yahoo.com)

## **M HEALTH, SAFETY AND ENVIRONMENTAL POLICY.**

**ICA LOGISTICS LTD** employs on retainer-ship a health and safety consultant. We offer bimonthly safety drills to staffs and our site supervisors. Safety briefs and debriefs are given every morning and evening during every fieldwork. For every fieldwork a safety officer is attached to the team who ensures that all safety protocols as prescribed by all internationally accepted safety rules are strictly observed.

In the case of any minor or major accident the safety officer (SO) is, on the scene commander. This is how **ICA LOGISTICS LTD** reflects its contingency plan for accidents and fire.

The (SO) ensures that all personnel (Staff, consultants, Local Labour Work Force etc) all receive adequate safety training for the job to be performed. He together with all teams reviews all jobs before commencements to adequately identify all potentially dangerous conditions.

1. Personnel shall keep the working area clean and orderly. No tools, equipments or any other items shall be lying on walking surfaces where they present tripping hazards.
2. Spills and slippery areas shall be promptly cleaned.
3. All working areas shall be adequately provided with fire extinguishers and muster points delineated all staff provided gears and equipment.
4. All equipments shall be operated with safety limits stipulated by manufacturers.
5. Speed and safety handling limits shall be strictly observed.
6. Where an injury occurs immediate report is to be made to (SO) and first aid administered before evacuation to a nearest medical center. An inventory of medical centers nearest to the area of operations shall be available at each location.
7. All accidents to be reported to head Office, the head Office in turn shall notify the clients immediately.
8. Where casualty is involved, same reporting procedure is maintained.

i. **Protecting the Marine Environment**

Danger is present at any instant to ships and off – shore installations. Accidents do occur also during cargo operations and exploration activities. Not only do we recognize environmental regulations, we also learn from our own experiences in the shipping industry and integrate improved pollution avoidance and safe cargo handling practices into the company training programs and our daily operations.

Preventive maintenance of equipment is essential. We pay careful and constant attention to all points related to mechanical wear or failure that could lead to accidents.

Protecting the environment is a top priority of our Quality assurance program.

ii. **Accident Investigation**

ICAL believes that accidents do not just happen but are caused. However, in our daily operations, we have tried as much as possible to imbibe in the staff the culture to work within safety limits. Minor accidents do occur but where this is recorded adequate procedures have been put in place for reporting and action.

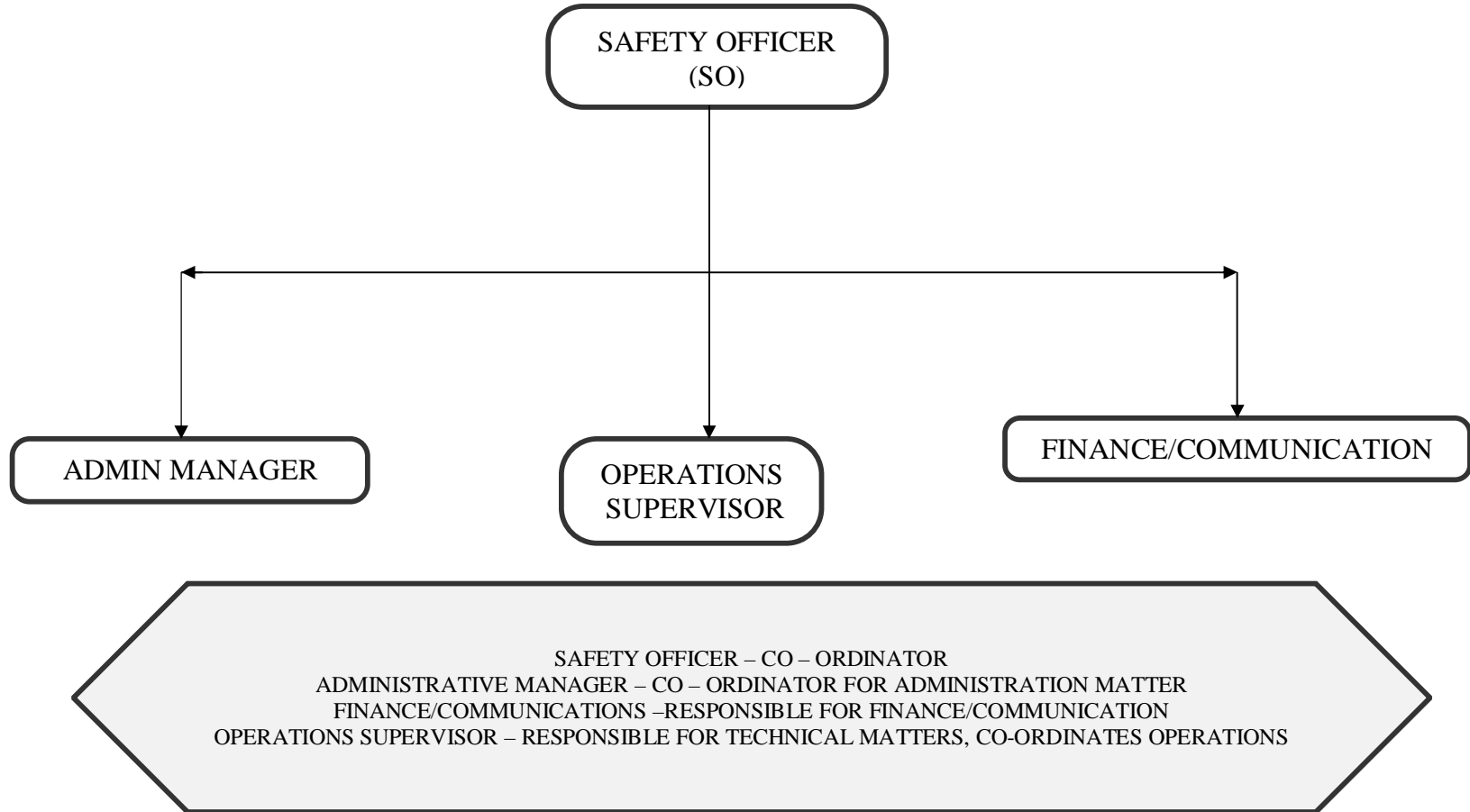
Accidents investigator shall commence initial investigations and where such accidents is major or where casualty has been recorded he shall follow the contingency plan to notify the relevant persons accordingly. Figure in the next page gives a brief summary of the Current Accident Investigation and Reporting Process in place.

*See Safety Chart (Overleaf)*





**ICA LOGISTICS LTD  
SAFETY MANAGEMENT SYSTEM CHART**



## **N. QUALITY CONTROL AND ASSURANCE PROCESS**

**ICA LOGISTICS LTD** adopts a quality system that emphasis safety, efficiency and cost – effectiveness in the execution of its services and projects.

Once a job is commenced a monitoring system is put in place till final testing and handover. At various stages of execution, audits are carried out to ensure compliance with laid down specifications.

A unit dedicated to quality assurance is headed by a Senior Level Officer and all jobs completed in line with our procedures are certificated accordingly.

### **I. Quality Control Procedure**

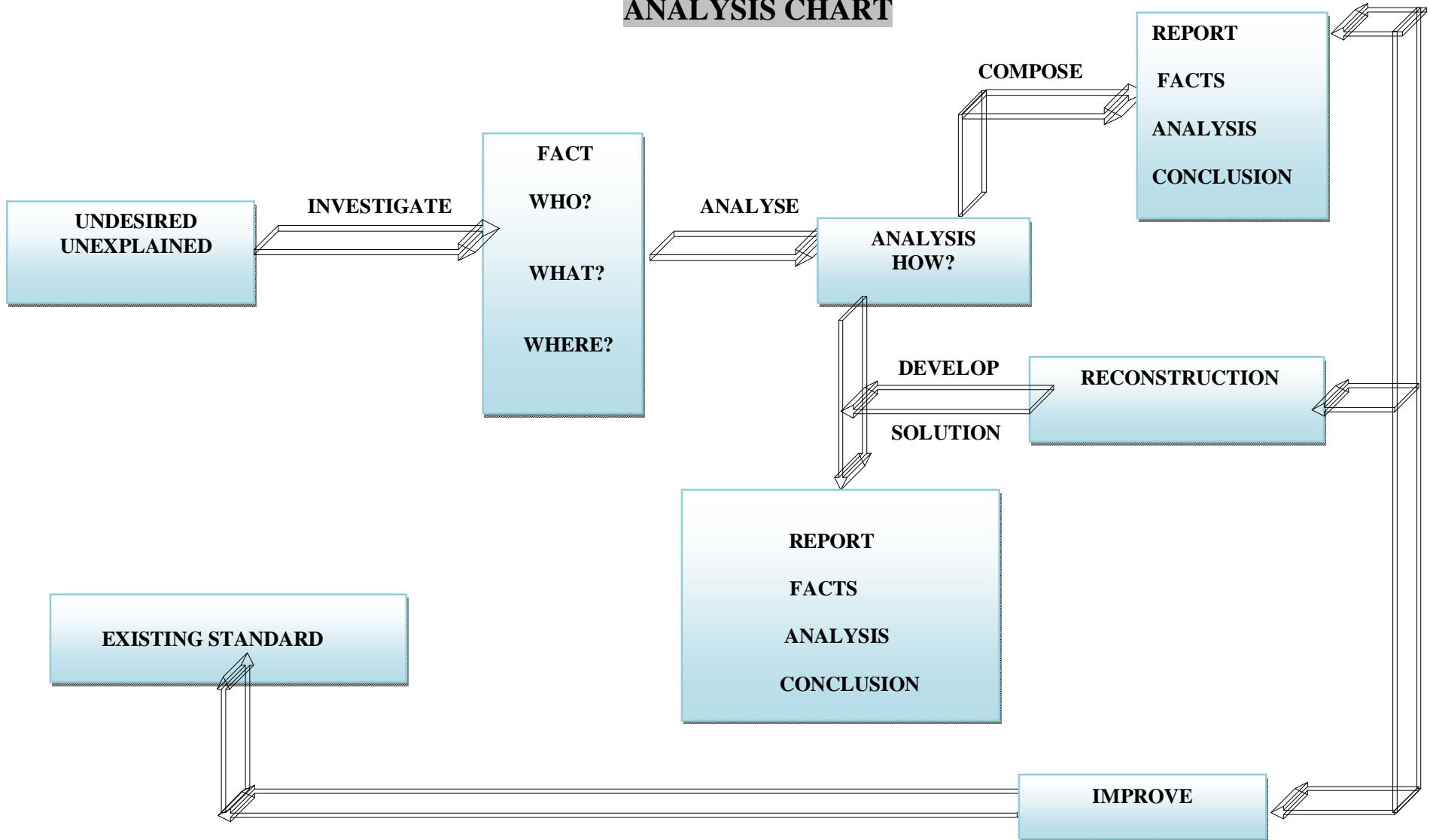
ICA LOGISTICS LTD maintains a quality control procedure in line with internationally acceptable standards. Our system is summarized:

- Initial Conception of Job
- Design of Feasibility
- Drawn – Up Programme of Action
- Mobilization of Men and resources to Sight
- Practical commencement of Job
- Periodic Audit and Certification
- Job Handover
- Post – Job Handover follow – up
- Warrantee

Each of these stages is properly audited and if there is a short – coming against the initial requirement of the project, the job has to be recommenced. Final audit is carried out when job completed. There is also a Post – contract execution follow-up

See Analysis Chart (Over Leaf)

# ICA LOGISTICS LTD. ANALYSIS CHART



**O. AUDITORS/CHARTERED ACCOUNTANTS**

TAMUNOIBI & CO. CHARTERED ACCOUNTANTS  
NO. 12, AZIKIWE ROAD, OPPOSITE CBN,  
PORT HARCOURT, RIVERS STATE.

**P. ATTORNEYS / SECRETARIES**

CLEMENT AKPAMGBO CHAMERS.  
NO. 7, SABA CLOSE, OFF ABA ROAD  
BY RUMUOLA JUNCTION PORT HARCOURT.  
RIVERS STATE.

**Q. BANKERS.**

1. FIDELITY BANK TRANS-AMADI, PORT HARCOURT.
2. ZENITH BANK INTERNATIONAL: TRANS-AMADI, PORT HARCOURT.
3. GUARANTY TRUST BANK: ABA ROAD, PORT HARCOURT.
4. FCMB BANK, TRANS-AMADI, PORT HARCOURT.
5. STANDARD CHARTERED BANK: TRANS-AMADI, PORT HARCOURT.
6. ECO NIGERIA PLC: TRANS-AMADI, PORT HARCOURT.

**R.****REQUIREMENT FOR NEW (TIP) TEMPORARY IMPORTATION PERMIT**

1. LETTER OF APPOINTMENT TO ICA LOGISTICS LTD.
2. CERTIFICATE OF INCORPORATION
3. TAX CLEARANCE CERTIFICATE
4. CONTRACTUAL AGREEMENT INDICATE DURATION OF CONTRACT AND CONTRACT SUM
5. DEED OF LEASE
6. INVOICE (FORM C 33)
7. BROCHURE OF THE EQUIPMENT
8. ORIGINAL COPY OF CERTIFICATE VALUE AND ORIGIN OF VESSEL
9. CERTIFICATE OF REGISTRATION OF VESSEL/ RIGS INDICATING CALL SIGN AND FLAG OF COUNTRY

**S. ANNEXES**

- 1. Certificate of Incorporation**
- 2. Registration as Shipping Company (NPA)**
- 3. Registration as Shipping Company (NMA)**
- 4. Customs Clearing Agency Licence.**
- 5. Vat Certificate**
- 6. DPR Registration**
- 7. Asycuda Allocation No. (East & West)**
- 8. Tax Clearance**